



**Bartlams**

**8 Rupert Street, Wolverhampton, WV3 9NS**

# £300,000

**Highly attractive and elegantly styled double-fronted 19th-century family home located close to Wolverhampton City Centre with great access links and close to local sought-after schooling. Particularly well-proportioned living space with a wealth of original period features, this property comprises; Entrance Hall with doors off into the two reception rooms both with feature fireplaces, dining room, downstairs W.C., garden room and kitchen, Cellar, and rear double garage with access via a gated access road. On the first floor are three double bedrooms with an ensuite and family bathroom. Gas central heating throughout and feature sash windows. Viewing is highly recommended to appreciate the size and style of this property, call our local team to arrange your viewing.**

- REAR DOUBLE GARAGE ACCESS VIA GATED ACCESS ROAD.
- THREE RECEPTION ROOMS, GARDEN ROOM AND CELLAR.
- THREE DOUBLE BEDROOMS WITH ENSUITE TO MASTER.
  - DOUBLE FRONTED VICTORIAN HOME.
  - ENCLOSED REAR COURTYARD.
  - MULTIPLE FEATURES THROUGHOUT.

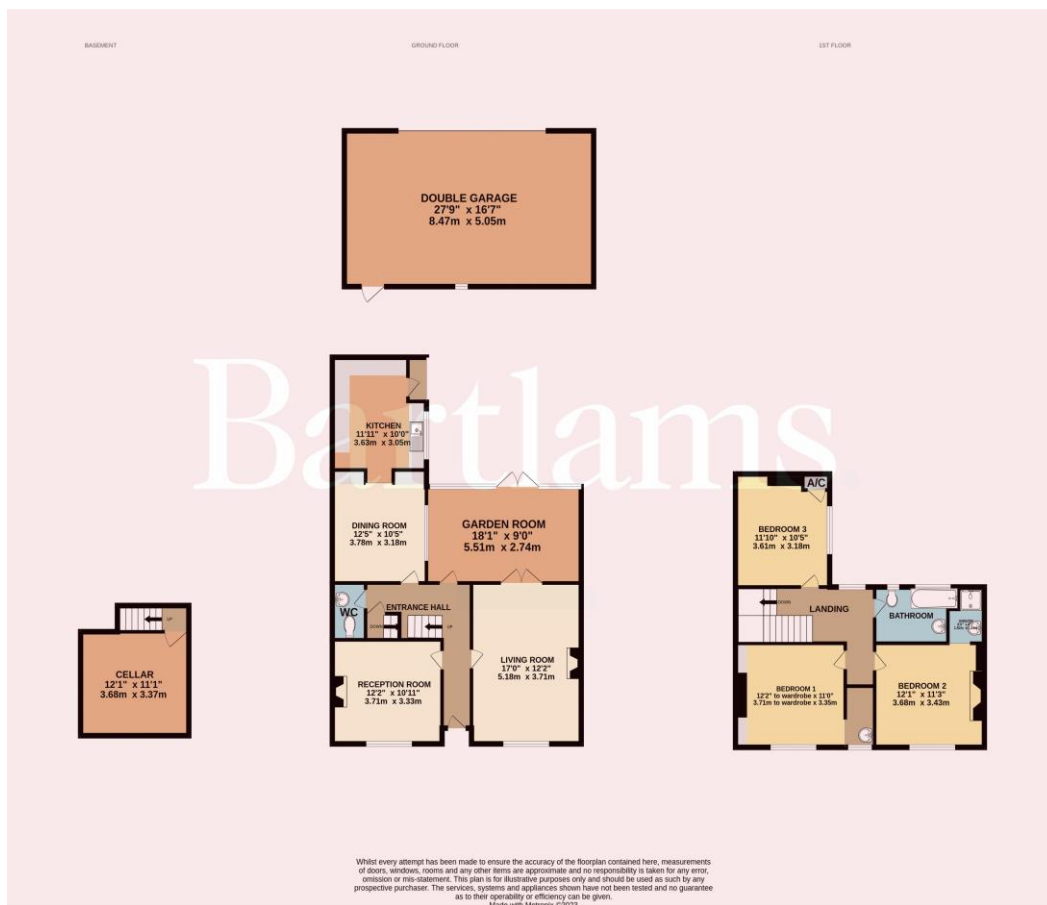


Freehold  
COUNCIL TAX BAND - C  
EPC RATING - tbc

**NOTICE:** These particulars, although believed to be correct, do not constitute any part of an offer or contract. All statements contained in these particulars as to this property are made without responsibility and are not to be relied upon as statements or representations of warranty whatsoever in relation to property. Any intending purchaser must satisfy themselves by inspection or otherwise as to the correctness each of the statements contained in these particulars. All measurements are approximate and for illustrative purposes only. Photographs are produced for general information and it must not be inferred that any item shown is included in the sale.

**DISCLOSURE:** As a professional Estate Agency our clients employ us to look after their best interests. This includes providing them with full details of offers made to purchase their property. To ensure our obligations to our clients are met we need to check the status of all potential purchasers. If you make an offer on this property we will ask a member of The Finance Family to contact you to verify your status. They are a leading firm of Independent Financial Advisers and Mortgage Brokers. Should they transact any business resulting from our introduction then we may receive a commission.

**Bartlams**



PLEASE SIGN BELOW TO AGREE THAT THE DETAILS ARE ACCURATE TO THE BEST OF YOUR KNOWLEDGE

SIGNED: .....

DATE: .....

24 High Street TETTENHALL Wolverhampton West Midlands WV6 8QT

01902 759888

tettenhallsales@bartlams.co.uk

www.bartlams.co.uk



